

GRILLE V5 - DOMETIC L500
FRIGE MOTORHOME VENT COVER

NOT original



PLEASE READ CAREFULLY

The product made by **Stampa3DMantova** is a reproduction similar to, but not identical to, the original.

The grille and frame are not produced with injection molding plastics but are made using **FDM 3D printing with PETG material**.

Products made with 3D printing have characteristics that make them less resistant to impacts, deformation, and wear compared to the original. Therefore, we ask that you **exercise caution during assembly and finishing operations**.

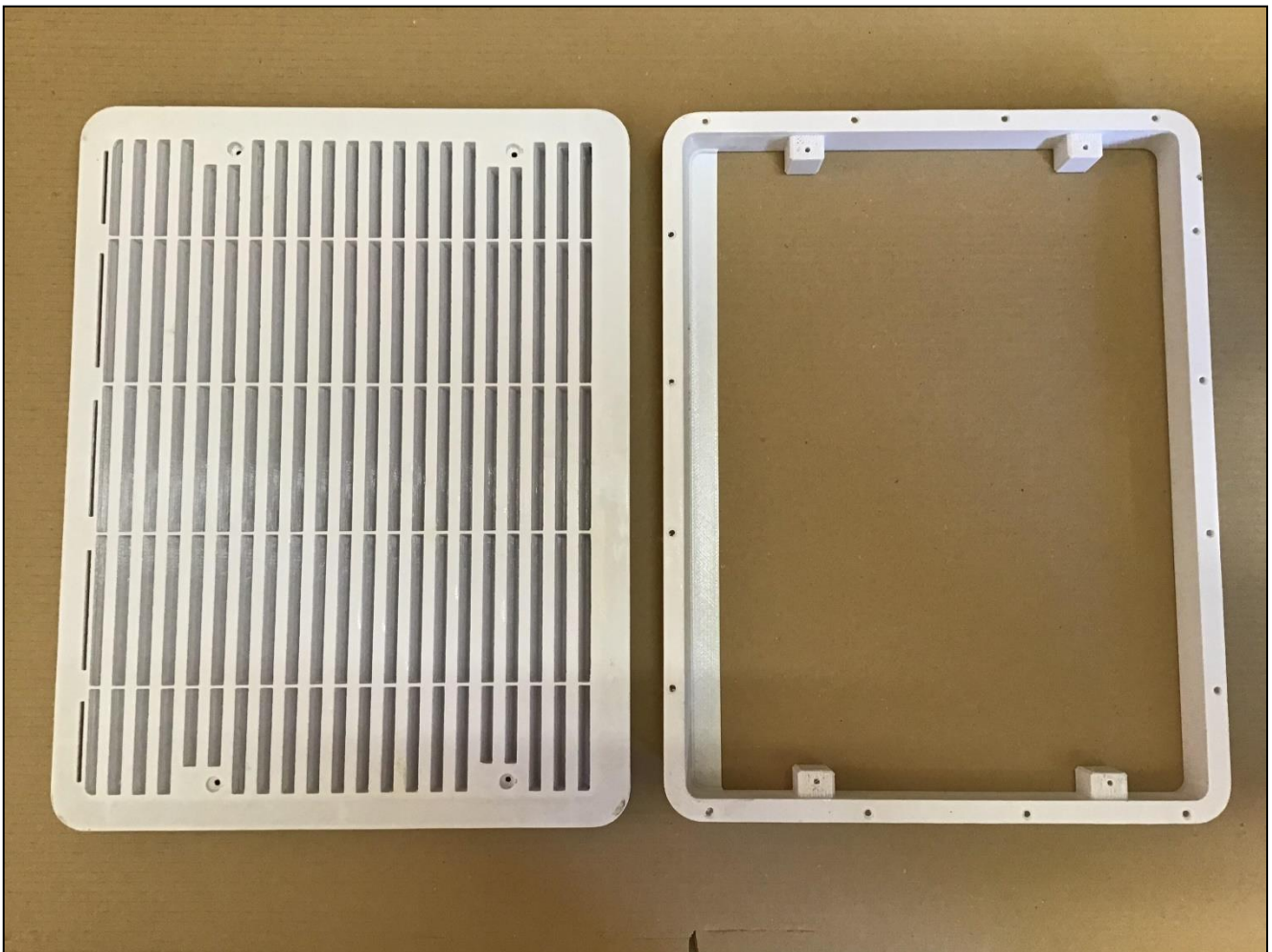
If using sanders, do not stay on the same spot for too long to avoid overheating the material.

MATERIALS INCLUDED:

- 1 Grille
- 1 Frame
- 4 long M4 x 30 screws
- 9 M4 x 6 screws + 9 washers
- 4 white caps
- Mosquito net fabric

MATERIALS NOT INCLUDED:

- 16 screws for frame fastening: USE THE ORIGINALS
- Wrench for M4 x 30 screws



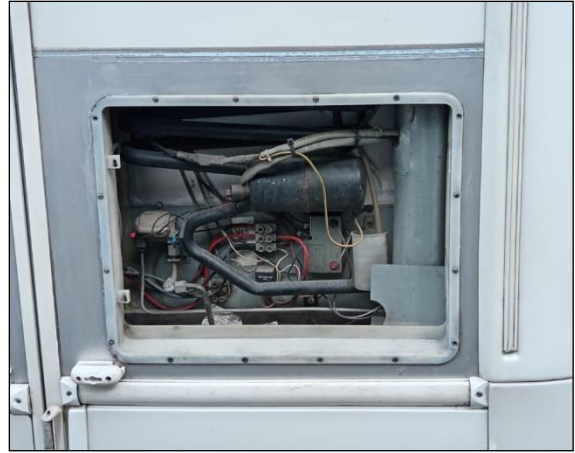
GRILLE

FRAME

FRAME ASSEMBLY INSTRUCTIONS

1

Remove the old frame.



2

Thoroughly clean the camper's exterior wall of any sealant residue.



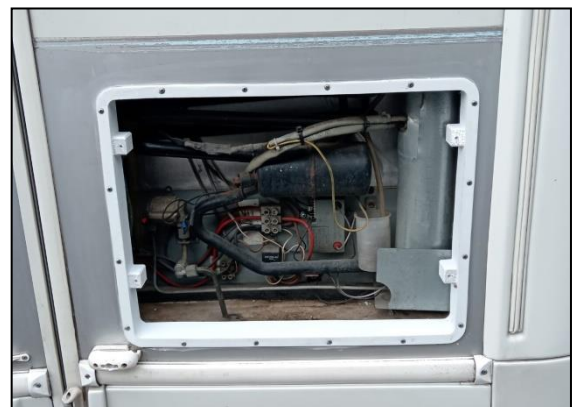
3

Apply new sealant in the designated groove of the new V5 FRAME.



4

Fasten the new V5 FRAME to the camper using the 16 ORIGINAL SCREWS.



GRILLE ASSEMBLY INSTRUCTIONS

5

Insert the
GRILLE onto
the frame.



6

Secure the
GRILLE with
the 4 supplied
M4x30 screws



7

Cover the
screws with
the supplied
white caps.

